

# Epithelial- Mesenchymal Transition

## SPEAKERS

Geert Berx

Thomas Brabletz

Amparo Cano

Gerhard Christofori

John G. Collard

Paolo Comoglio

Shoukat Dedhar

Carl-Henrik Heldin

Antonio García de Herreros

Caroline Hill

Raghu Kalluri

Michael Klymkowsky

Lionel Larue

David McClay

Aristidis Moustakas

Donald Newgreen

Angela Nieto

Arne Östman

Raymond Runyan

Pierre Savagner

Jean-Paul Thiery

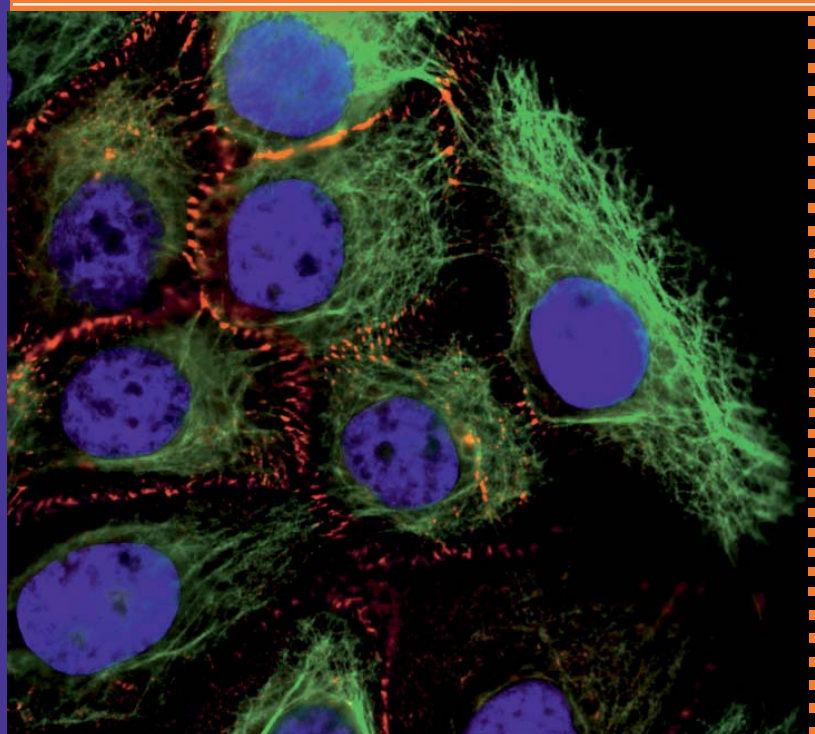
Erik Thompson

Avri Ben Ze'ev

3rd International Meeting

## DEADLINE

July 30th, 2007



» The concept of epithelial-mesenchymal (EMT) transition describes a fast and sometimes reversible modulation of cell phenotype occurring during development at key stages of embryogenesis. «

## ORGANISERS

Pierre Savagner ■  
U868 INSERM  
CRLC Val d'Aurelle  
France  
[psavagner@valdorel.fnclcc.fr](mailto:psavagner@valdorel.fnclcc.fr)

Aristidis Moustakas ■  
Ludwig Institute for Cancer Research  
Sweden  
[Aris.Moustakas@LICR.uu.se](mailto:Aris.Moustakas@LICR.uu.se)

Amparo Cano ■  
Universidad Autónoma de Madrid  
Ciudad Universitaria de Cantoblanco  
Spain  
[acano@iib.uam.es](mailto:acano@iib.uam.es)

Antonio García de Herreros ■  
Unitat de Biologia Cel·lular i Molecular  
Universitat Pompeu Fabra  
Spain  
[Agarcia@imim.es](mailto:Agarcia@imim.es)

## CO-SPONSORS

TEMTIA (The EMT international organization) ■  
<http://www.mtci.com.au/temtia.html>  
The EMT International Association, Inc

EpiPlastCarcinoma ■  
<http://www.epiplastcarcinoma.org/>

EpiPlastCarcinoma 