

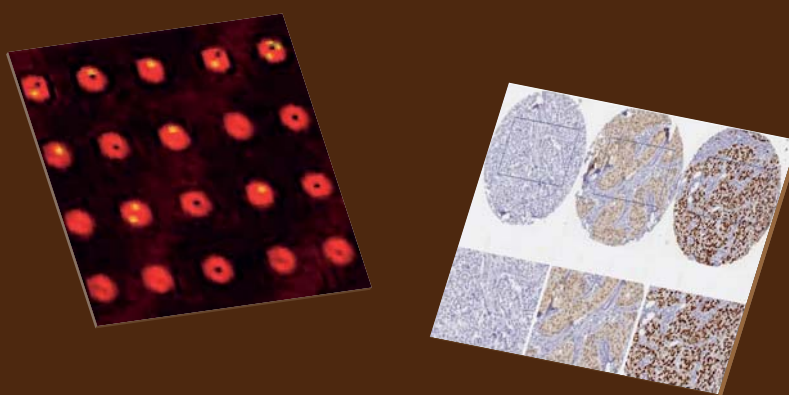


## TISSUE & PROTEIN MICROARRAYS:

### from Construction to Image Analysis

#### TOPICS

- Tissue processing and paraffin-embedded block construction
- Tissue microarray construction and sectioning
- Immunohistochemical staining, with emphasis on application of automated approaches
- Digital slide scanning of both full face section and tissue microarray slides
- Data storage and use of online approaches for digital slide management
- Image analysis: manual and automated methods
- Construction of protein arrays
- Standard protein array protocols and associated image analysis



#### ORGANISER

Prof. William M. GALLAGHER BSc PhD CBiol MIBiol  
Associate Professor of Cancer Biology

UCD School of Biomolecular and Biomedical Science

Conway Institute

University College Dublin

Dublin, IRELAND

[william.gallagher@ucd.ie](mailto:william.gallagher@ucd.ie)

#### SPEAKERS

**Prof. William GALLAGHER**  
UCD Conway Institute  
Dublin, Ireland

**Prof. Elaine KAY**  
Beaumont Hospital/Royal College of  
Surgeons in Ireland  
Dublin, Ireland

**Dr. Jorge REIS-FILHO**  
The Breakthrough Breast Cancer  
Research Centre  
Institute of Cancer Research  
London UK

**Dr. Stephen HEWITT**  
Advanced Technology Center  
National Cancer Institute  
USA

**Prof. Dolores CAHILL**  
UCD Conway Institute  
Dublin, Ireland

**Prof. Karin JIRSTROM**  
Lund University  
Sweden

**Prof. Caroline KAMPF**  
Uppsala University  
Sweden

**Dr. Donal O'SHEA**  
School of Biotechnology  
Dublin City University  
Dublin, Ireland

**Prof. Pádraig CUNNINGHAM**  
University College Dublin  
Dublin, Ireland

\*There will, in addition, be speakers  
from the following companies:

**ZEPTOSENS**

**DEFINIENS**

**APERIO**

#### CO-SPONSOR



[www.ucd.ie/](http://www.ucd.ie/)

#### CONTACT

**Denise RYAN**  
[denise.ryan@ucd.ie](mailto:denise.ryan@ucd.ie)

#### DEADLINE FOR APPLICATIONS

10th April, 2008

\* Priority will be given to early applicants

<http://cwp.embo.org/pc08-27/>