



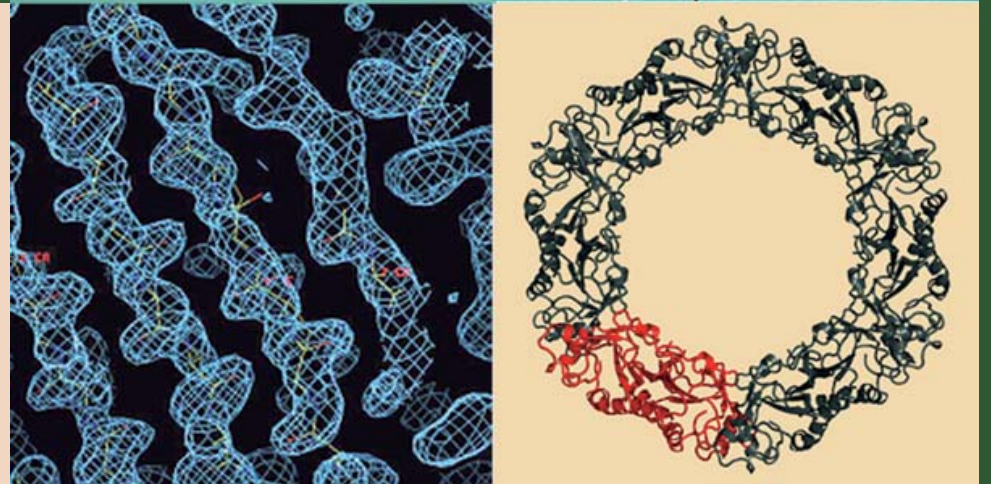
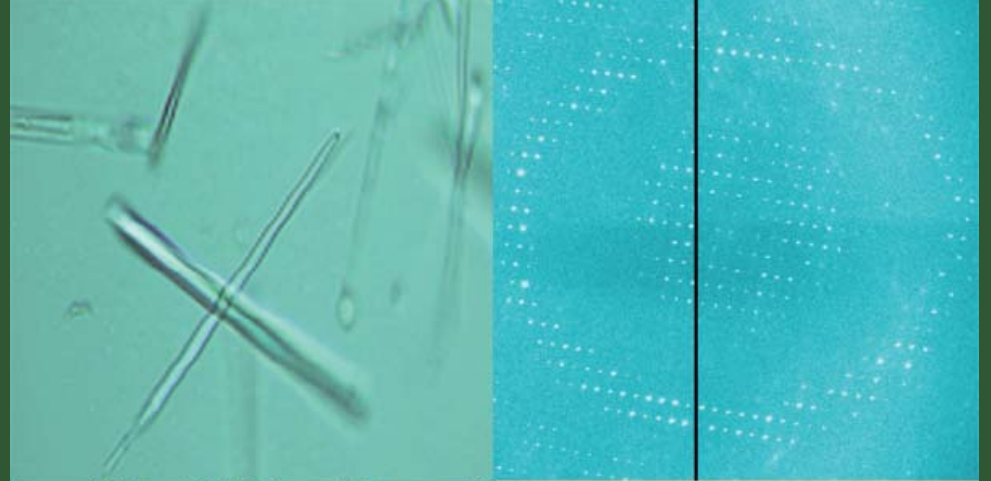
X-RAY CRYSTAL STRUCTURE DETERMINATION OF MACROMOLECULES

14 - 20 September | 2008
Synchrotron Soleil | FRANCE

This course will be an introduction to the determination of protein & DNA/RNA X-ray structures and covers the process from construct design till validation and deposition of the structure in the PDB.

Lectures will be combined with practicals on:

Data collection on the PROXIMA I beamline
Crystallization
SAD/MAD structure determination
Structure refinement
Model building and validation



SPEAKERS

Kevin COWTAN, York University

Yves JACOB, Pasteur Institute

Anastassis PERRAKIS, NKI

Jim PFLUGRATH, Rigaku

Randy READ, Cambridge University

Jane RICHARDSON, Duke University

Thomas SCHNEIDER, EMBL Hamburg

Enrico STURA, CEA Saclay

Piotr SLIZ, Harvard University

Herman van TILBEURGH, University Paris-Sud

Clemens VONRHEIN, Global Phasing

Peter ZWART, Berkeley University

ORGANISERS

LEBS GIF-SUR-YVETTE :

Valerie Biou

SYNCHROTRON SOLEIL :

Paloma Fernández-Varela

Frédérique Fraissard

Pierre Legrand

Corinne Mazouffre

Rob Meijers

William Shepard

Andrew Thompson

CO-SPONSORS



Registration deadline: 15th May, 2008

<http://cwp.embo.org/pc08-26/>