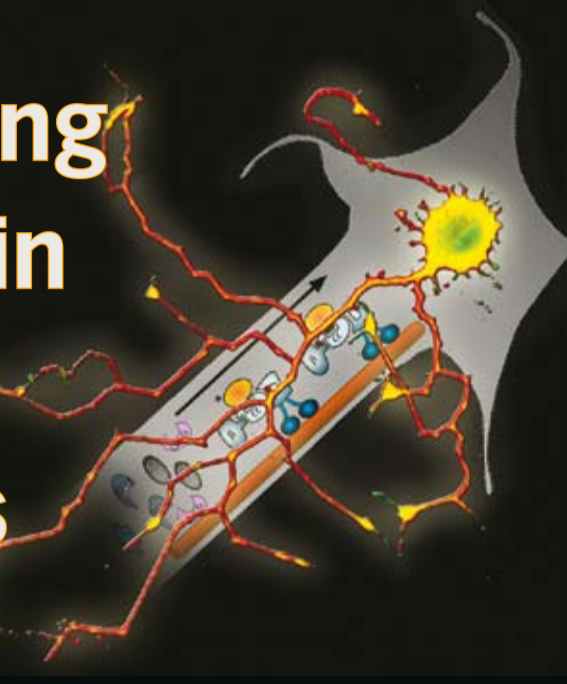


SPATIAL 2009

Overcoming Distance in Signaling Networks



EMBO Conference Series on:
'Spatial Dynamics of Intracellular Signaling'

15 – 19 March | 2009

Maale HaChamisha | Israel

This conference focuses on mechanisms of propagation of intracellular signals and information over distances within cells, and it follows an EMBO/FEBS/ISF Workshop on this topic held in March 2007.

We aim to have a balance between different disciplines and topics, with particular emphasis on complementation of theory and mathematical models with experimental approaches.

Speakers

Viki Allan (*Manchester*)

Leah Edelstein-Keshet (*Vancouver*)

Richard Firtel (*San Diego*)

Elizabeth Fisher (*London*)

Jeffrey Gerst (*Rehovot*)

David Ginty (*Baltimore*)

John Hancock (*Brisbane*)

David Holcman (*Rehovot*)

Christine Holt (*Cambridge*)

Henry Krause (*Toronto*)

Karsten Kruse (*Saarbrücken*)

Andre Levchenko (*Baltimore*)

Petra Levin (*St. Louis*)

Bela Novak (*Oxford*)

Janni Petersen (*Manchester*)

Yitzhak Pilpel (*Rehovot*)

Anne Ridley (*London*)

Erin Schuman (*Pasadena*)

Rosalind Segal (*Boston*)

Stanislav Shvarstman (*Princeton*)

Ernst Stelzer (*Heidelberg*)

Jose Vilar (*New York*)

* Up to 20 additional talks will be selected from abstract submissions.

Scientific Organisers

Mike Fainzilber (*Rehovot*)

Giampietro Schiavo (*London*)

Boris Kholodenko (*Philadelphia*)

Chairs & Discussion Leaders

Mike Fainzilber (*Rehovot*)

Michael Elbaum (*Rehovot*)

Jonathon Howard (*Dresden*)

Carlos Ibanez (*Stockholm*)

Boris Kholodenko (*Philadelphia*)

Giampietro Schiavo (*London*)

Rony Seger (*Rehovot*)

Joerg Stelling (*Zurich*)

Jeffery Twiss (*Wilmington*)

John Tyson (*Blacksburg*)

Co-sponsors

FEBS



ISF & Misrahi Foundation



Deadline for registration & abstract submission:
December 15th, 2008

Contact: spatial@targetconf.com

<http://cwp.embo.org/cfs09-03/>

